

CAPSICUM



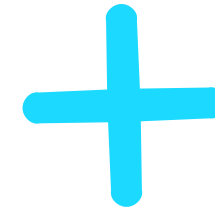
AATMIL Milk ATMs

Fresh Milk for Everyone, Everywhere

A comprehensive guide to our innovative milk vending machines, features and benefits



Table of Content



About us

Details

Features

Contact

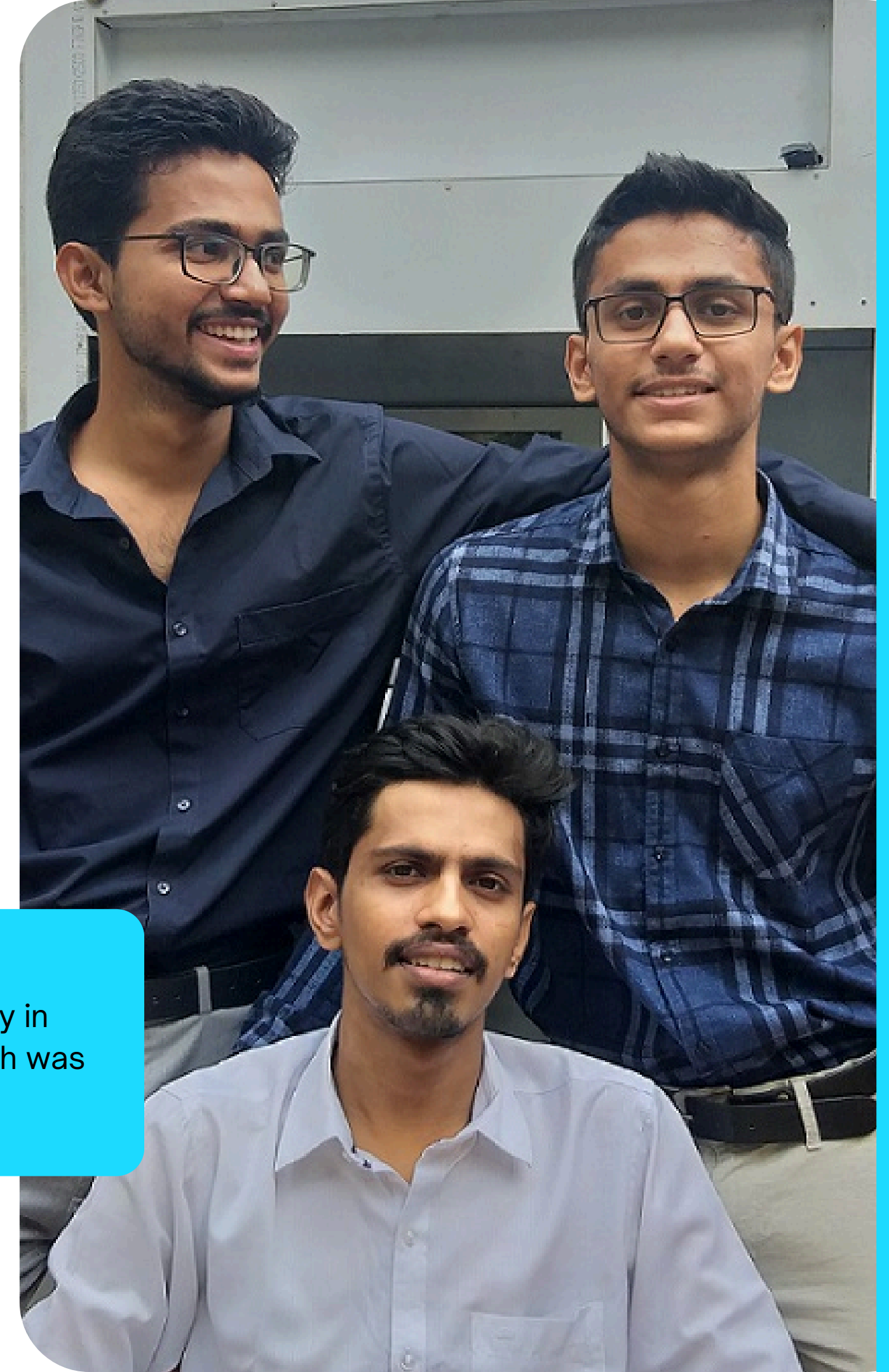


CAPSICUM

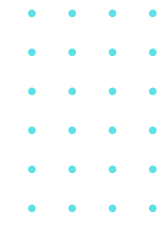
About us ⁺

Capsicum was found early 2012 by Bhavsar Brothers, when they were busy preparing for their IIT's in KOTA. Two teenagers, hundreds of kilometers from their hometown, dreamed of Capsicum. They didn't know exactly how to start, but their goal was to establish their own company someday.

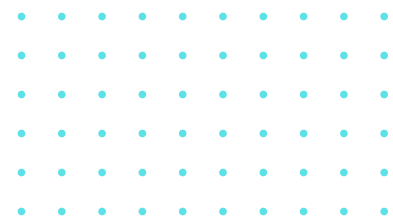
Unfortunately they couldn't crack IIT, but when they got into engineering, they started early and they established their company in their college days itself! Shubham was in his second year and Yash was in his first year when they started working on this project.



CAPSICUM



Machine Type	Tank Configuration	Details
AATMIL Shop Milk ATMs	Single Tank	Specific type of milk (e.g., cow, buffalo, gir cow)
	Dual Tank	Two types of milk (e.g., cow and buffalo)
	Triple Tank	Three types of milk (e.g., cow, buffalo and gir cow)
AATMIL Mobile Milk ATMs	Single Tank	Specific type of milk (e.g., cow, buffalo, gir cow)
	Dual Tank	Two types of milk (e.g., cow and buffalo)
	Triple Tank	Three types of milk (e.g., cow, buffalo and gir cow)



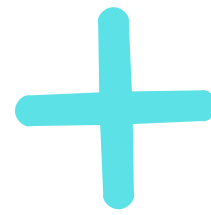


AATMIL Shop Milk Vending Machine

Storage Capacity	Smart Card	UPI Feature	Screen Size	AATMIL App (Customer & Operator)
65 liters	Yes	Yes	7 inches	Yes
100 liters	Yes	Yes	15 inches	Yes
150 liters	Yes	Yes	15 inches	Yes
200 liters	Yes	Yes	15 inches	Yes
300 liters	Yes	Yes	15 inches	Yes
600 liters	Yes	Yes	15 inches	Yes

AATMIL Mobile Milk Vending Machine

Storage Capacity	Smart Card	UPI Feature	Screen Size	AATMIL App (Customer & Operator)
200 liters	Yes	Yes	15 inches	Yes
300 liters	Yes	Yes	15 inches	Yes
600 liters	Yes	Yes	15 inches	Yes



Additional Details :

LITER

A liter is a unit that shows the capacity of the machine you require. You have the option to order a machine with a single, dual, or triple tank. For instance, if you need a 500-liter machine with a dual tank – such as a 300-liter tank for buffalo and a 200-liter tank for cows – you can place your order accordingly.

PRICE

The price of a machine depends on the tank configuration chosen: single, dual, or triple tanks, impacting the cost for different machine sizes like a 500-liter one. this is only machine price other charges and GST is applicable.

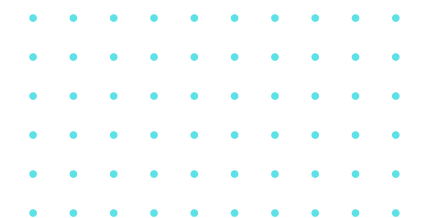
T-SCREEN/ NON TOUCH SCREEN

A screen is an essential component of the machine , enabling customers to perform daily tasks like checking balances, select a milk customer want and make a payment through QR code, and recharge card. our shop milk machines and mobile milk machines have non touch screen by default. but if want touch screen for Shop MILK ATMs then charges will apply (we not provide touch-screen for vehicle milk ATMs).

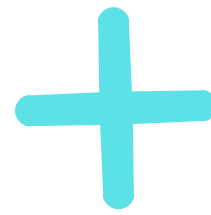
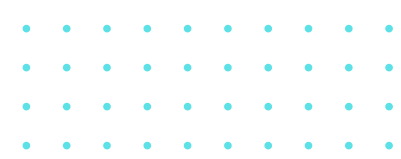


REFRIGERATION

The refrigeration system in our milk ATM keeps your milk fresh for 24 to 48 hours. and non refrigeration machines have insulation that keeps milk fresh 4 to 5 hours.



CAPSICUM



UPI

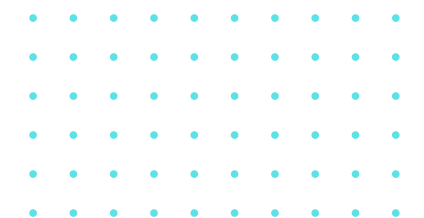
UPI is utilized for milk payments, making it accessible for everyone to purchase milk using UPI.

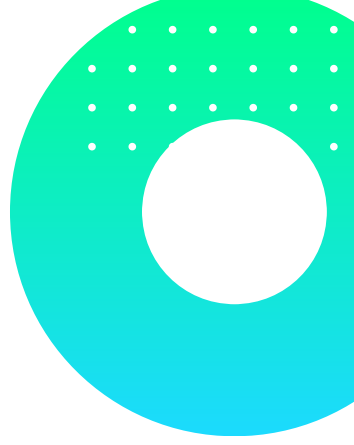
SMART CARD

A smart card is designed for your loyal customers, specifically those who purchase milk from you daily. You can provide these cards to them at no charge, allowing them to top up the card and use it for transactions. The key advantage for you is having your customers' funds in advance.

APP

The AATMIL App offers a complete milk management solution with separate interfaces for customers and operators. Customers can buy milk, recharge accounts, and receive real-time updates on availability. Operators can track sales, generate reports, manage accounts, and access analytics.

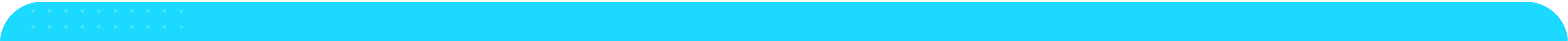


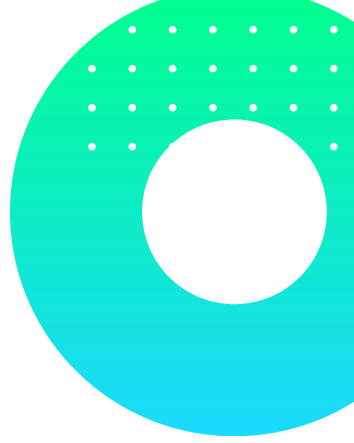


Features



- **UPI** - Customer can get a milk through UPI , they just need select milk as they want and make payment milk will dispense.
- **AATMIL APP** - We provide **2AATMIL APP** one for customer and one for Milk machine owner,
 - 1.*for Customer* - Customer can recharge a card , view card balance, check monthly bill, check milk is available or not in machine from anywhere .
 - 2.*for machine owner* - Can check milk sold, regular customer, monthly report, bill, and also owner can modify milk rate and make other changes in **MILK ATM** machine and also check how much milk is remain.

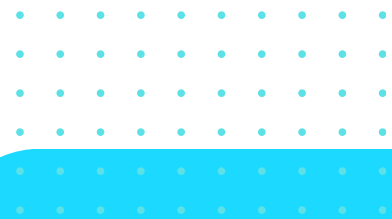




Features



- **Smart Card** - we give 100 smart card free of cost that you can provide your daily customer to get milk using card, they can recharge a card through a AATMIL App or Milk ATM.
- **Touch/Non-Screen:** The screen is utilized for daily operations such as getting milk, recharging cards, and making milk payments. The screen is offered in two variants Touch and non Touch . machines have non touch-screen by default and for touch screen charges is different.
- **Body and other configuration** - Stainless Steel , Agitator, refrigeration, insulation, compressor, condenser, Motorized pump, 4 wheels with one pair of brake, 304 SS Tank with Agitator.



Our Presence



 Pune

 Mumbai

 Chh.Sambhajinagar

 Buldhana

 Yevatmal

 Punjab

 Haryana

 Kerala

 Telangana

 Rajsthan

 Bihar

 Gujarat

 Odisha

 Tamilnadu

CAPSICUM

Contact Us +

Capsicum is a leading manufacturer of milk vending machines, after Milk, capsicum is ready to enter into manufacturing of other vending machines as well!



+ 91-9130024042



www.aatmil.com



DGP NAGAR 2, AMBAD
Nashik



CAPSICUM

Thank You

We appreciate your time and interest in AATMIL Milk ATMs

At AATMIL, our mission is to make fresh milk accessible to everyone, everywhere. We are committed to providing innovative and reliable milk vending solutions that benefit both customers and operators.

